

## ERSATZTEILE

Pièces de rechange - Onderdelen - Reservedele - Varaosat - Pezzi di ricambio  
Reservedelen - Peças - Reservdelar - Piezas de recambio

## SPARE PARTS

## STROMLAUFPLÄNE

Schéma de connexions - Stroomschema - Kredslobsdiagrammer - Kytentäkaavio  
Aansluitschema - Schema elettrico - Koplingskjema - Esquema electrico - Elschema  
Esquema eléctrico

## CIRCUIT DIAGRAMS

### GIS CHAIN HOIST

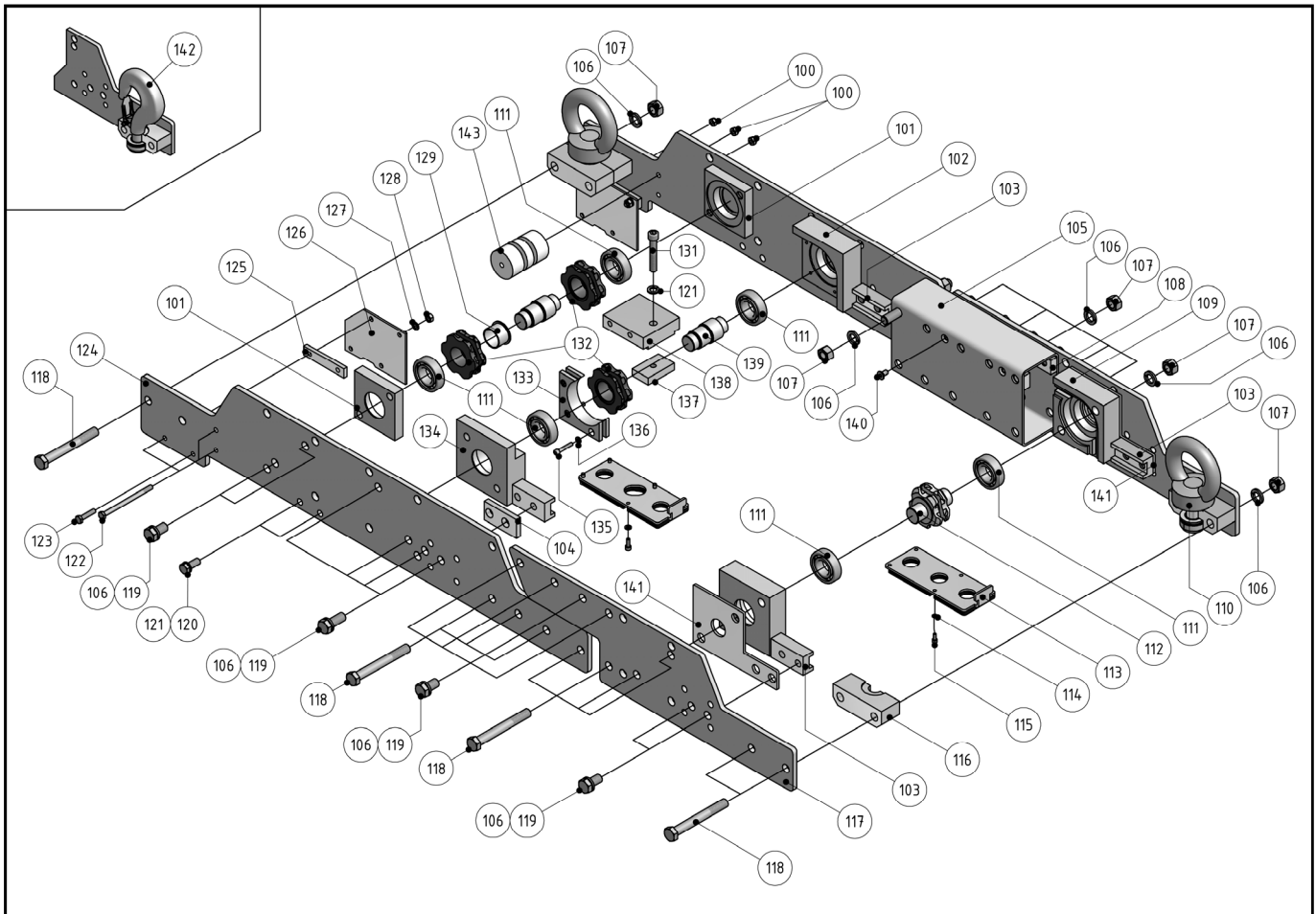
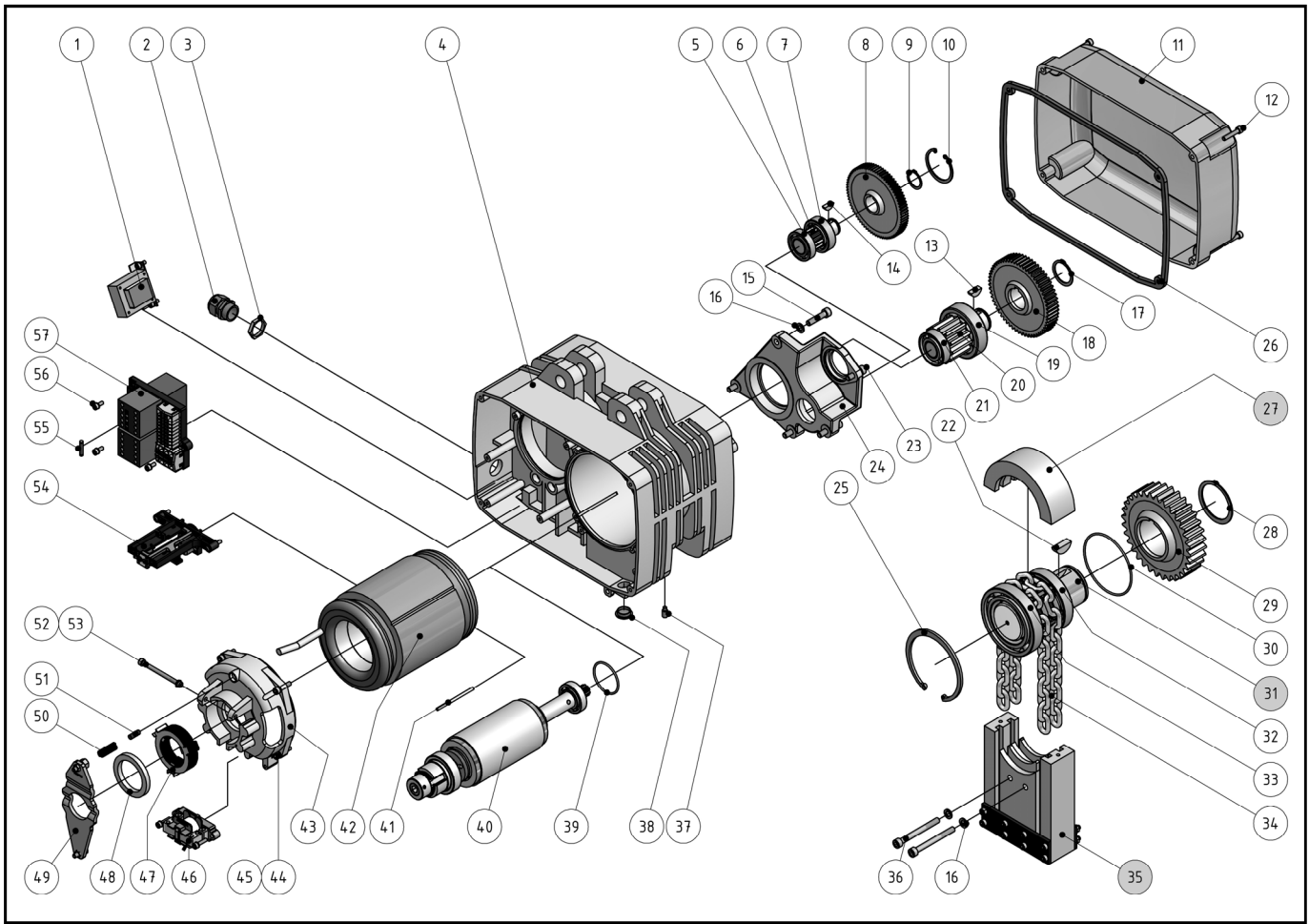
☞ SWISS QUALITY

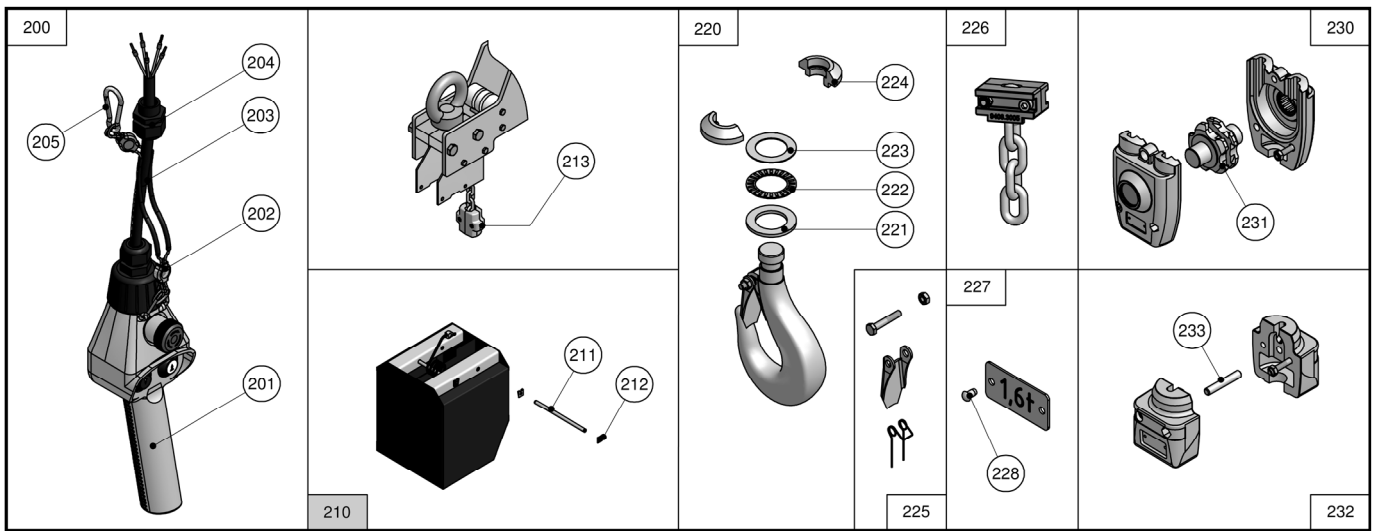
**GCHS 2000**



M A D E I N S W I T Z E R L A N D







		GCHS 2000				GCHS 2000				GCHS 2000	
1	230/42V 50/60Hz		9056.4500.4	51	ø6.8 x 21		9210.3345.4	200	2K NA 3 m		9290.1086.3
	400/42V 50/60Hz		9056.4501.4	52	M6		9031.1276		2K NA 4 m		9290.1087.3
2	M25 x 1.5		9055.3103	53	M6 x 80		9030.0284		2K NA 5 m		9290.1088.3
3	M25 x 1.5		9055.4013	54	119 x 103.5, kompl.		9401.3015.3		2K NA 6 m		9290.1089.3
4	345 x 304.5 x 251.5		9408.3000.0		119 x 103.5, NA kompl.		9401.3018.3		2K NA 8 m		9290.1090.3
5	6005, 25/47 x 12		0038.1036	55	1.6A		9052.0012		2K NA 10 m		9290.1091.3
6	ø33.67 x 74 z=13		9408.3025.4	56	M5 x 16		9030.3260		2K NA 12 m		9290.1092.3
7	6205, 25/52 x 15		9038.0019	57	2-t NA 42V		9402.1300.2		2K NA 15 m		9290.1093.3
8	ø115.92 z=78, -N/-NF		9408.3023.3						2K NA 20 m		9290.1094.3
	ø109.5 z=73, -SF		9408.3024.3					201	2K NA		9290.1084.3
9	A 25 x 1.2		0031.1016						1.3 x 2.6 x 5		9039.1104
10	1 52 x 2		9031.2206					203	5 x 0.75 mm², L=		9055.0110
11	345 x 230 x 96		9408.3001.2						M20 x 1.5		9055.3102
12	M6 x 35, In-6kt		9030.0278	100	M8, Nylon		9031.1277	205	L=50		9031.8004
	M6 x 35		9030.3261	101	100/20 x 100		9408.2024.3	210	2000/2x6		9405.2029.1
13	8 x 9 x 21.63		9036.0601	102	125/45 x 125		9408.2012.3		2000/2x12		9405.2031.1
14	6 x 7.5 x 18.75		9036.0600	103	40/25 x 80		9405.1021.4	211	ø8 x 166		9225.3030.4
15	M8 x 35		9030.0289	104	40/10 x 80		9408.2020.4	212	Gr. 8		9031.2400
16	M8		9031.3904	105	160 x 90 x 4, L=		9408.2002.3	213	72 x 36 x 65		9225.3021.3
17	A 35 x 1.5		0031.1020	106	M16		9031.3804	220	166.5 x 106.2		9225.3094.4
18	ø125.42 z=57		9408.3026.3	107	M16		0031.0042	221	ø47/30 x 3		9038.1750
19	6307, 35/80 x 21		9038.0022	108	30/15 x 255		9408.1019.4	222	ø47/30 x 2		9038.0252
20	ø58.81 x 108 z=12		9408.3027.4	109	125/40 x 125		9405.1012.3	223	ø47/30 x 1		0038.3128
21	NJ205, 25/52 x 15		0038.1824	110	126 x 188		9408.1028.4	224	ø47 x 18		9225.3096.4
22	10 x 13 x 31.43		9036.0603	111	6206-2Z 30/62 x 16		0038.1128	225	s=2.0		9220.3482.4
23	M8 x 25		9030.0287	112	ø78 x 85.6		9225.3041.4	226	66 x 44 x 34		9408.3005.3
24	213 x 164 x 62.5		9408.3002.1	113	80/13 x 209		9405.3020.3	227	0.4 t		9220.3470.4
25	1 110 x 4		0031.1137	114	M6		9031.3903		0.5 t		9220.3471.4
26	347 x 232 x 6		9408.3003.3	115	M6 x 16		9030.0275		0.63 t		9220.3472.4
27	140 x 70 x 49		9408.2014.4	116	45/30 x 120		9408.2025.4		0.8 t		9220.3473.4
28	A 60 x 2		0031.1028	117	180/10 x 704.4		9408.1014.3		1 t		9220.3474.4
29	ø143.86 z=34		9408.3029.3	118	M16 x 130/44		9030.5325		1.25 t		9220.3475.4
30	ø95 x 2.5		9035.0017	119	M16 x 30		0030.2615		1.6 t		9220.3476.4
31	ø93 x 140, 6T		9408.2010.2	120	M12 x 30		0030.2600	228	3 x 5		9031.6604
32	6012 2RS, 60/95 x 18		0038.1085	121	M12		9031.3907	230	110 x 98 x 151		9225.3020.2
33	6212 2Z, 60/110 x 22		9038.0020	122	M8 x 120/22		9030.5282	231	ø78 x 85.6		9225.3041.4
34	7 x 22		9039.0007	123	M8 x 35		9030.5274	232	72 x 72 x 77		9225.3019.2
35	138.7 x 177 x 49		9408.2018.4	124	180/10 x 1110		9408.1013.1	233	ø8 x 49		9220.3166.4
36	M8 x 80		9030.0309	125	20/8 x 100		9408.1020.4				
37	M6 x 16		9030.2502	126	110/4 x 150		9405.1015.4				
38	M20 x 1.5		9055.3512	127	M8		9031.3904				
39	ø47 x 2.5		9035.0015	128	M8		0031.0008				
40	2-t ø80 x 130 z=10, -NF		9408.3034.3	129	39/35 x 26		9038.1002				
	2-t ø80 x 130 z=15, -SF		9408.3035.3	131	M12 x 70/36		9030.0315				
41	ø4 x 75		9230.3097.4	132	ø84 x 26		9230.2070.4				
42	L=130, 3Ph 400V 50Hz, 8/2p, -NF/-SF		9407.0400.3	133	99/24.3 x 99		9408.2011.3				
	L=130, 3Ph 230V 50Hz, 8/2p, -NF/-SF		9407.0402.3	134	125/45 x 125		9408.2019.3				
43	ø156 x 93.5		9405.3005.2	135	M6 x 35/24		9030.0278				
44	M6 x 25		9030.0276	136	M6		9031.3903				
45	M6		9031.3903	137	65/15 x 40		9408.1016.4				
46	230V 50/60Hz, kompl.		9056.2201.4	138	100/30.5 x 90		9408.1017.4				
	400V 50/60Hz, kompl.		9056.2200.4	139	ø39 x 85.5		9408.2022.4				
47	ø80 x 22		9408.3039.4	140	M8 x 16		9030.1813				
48	ø68/51 x 6		9408.3055.4	141	125/5 x 208.5		9408.2021.4				
49	168 x 65 x 9		9405.3014.3	142	209 x 127.71		9235.3110.3				
50	ø9.4/1.6 x 30		9400.3042.4	143	ø55 x 89		9408.2026.4				

**Elektrokettenzüge - Electric chain hoists - Palans électriques à chaîne**

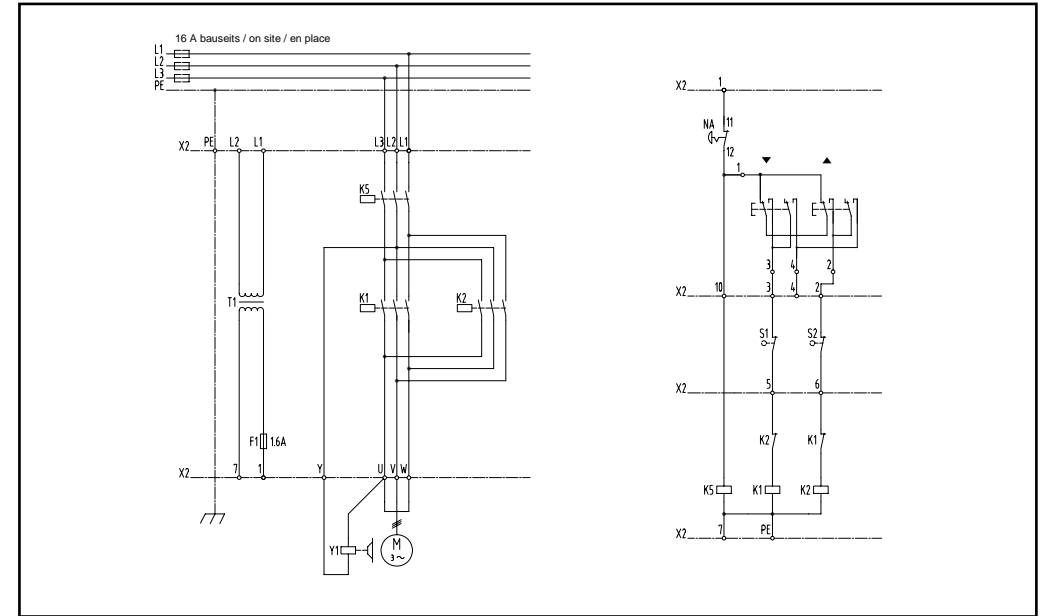
Schützensteuerung 1 Geschwindigkeit mit Not-Aus **3 Ph 9400.9500.3**  
 Contactor control 1 speed with emergency stop  
 Commande par contacteurs 1 vitesse avec marche-arrêt

2 Geschwindigkeiten mit Not-Aus **3 Ph 9400.9501.3**  
 2 speeds with emergency stop  
 2 vitesses avec marche-arrêt

F	Steuersicherung	Control fuse	Fusible de commande
K	Schütz	Contacteur	Contacteur
L	Zuleitung	Power supply	Alimentation électrique
N	Nullleiter	Neutral	Neutre
NA	Not-Aus	Emergency stop	Marche-arrêt
PE	Erdung	Earth	Mise à la terre
S	Schalter	Switch	Interrupteur
T	Transformator	Transformator	Transformateur
U, V, W	Motor	Motor	Moteur
X	Klemmenleiste	Terminal strip	Barrette de raccordement
Y	Bremse	Brake	Frein

9400.9500.3

3 Ph



9400.9501.3

3 Ph

