



swiss lifting solutions

ERSATZTEILE | STROMLAUFPLÄNE GPK 1000

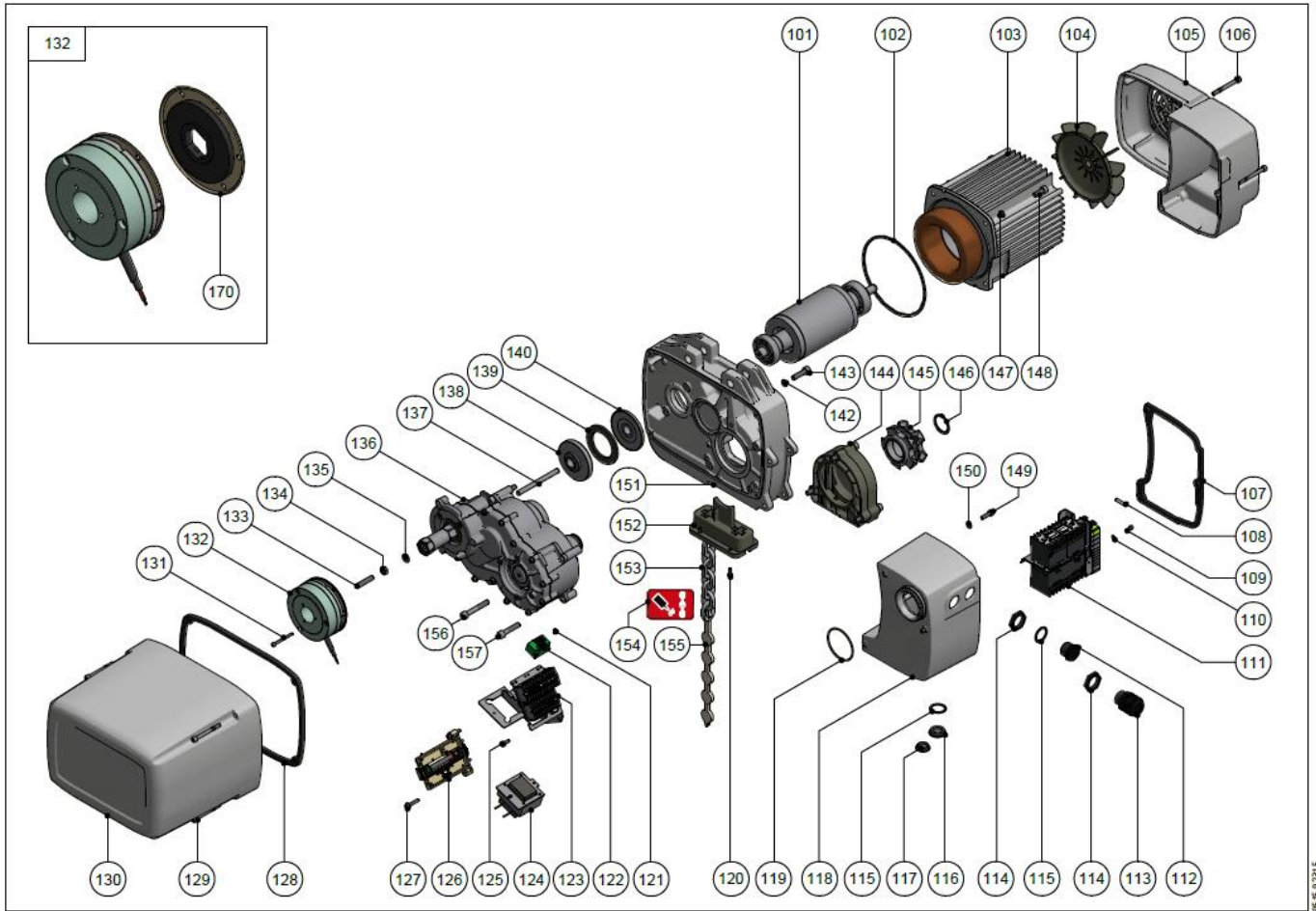
Spare parts | Pièces de rechange | Onderdelen | Reservedele | Varaosat |
Pezzi di ricambio | Reservedelen | Peças | Reservdelar | Piezas de recambio

Circuit diagrams | Schéma de connexions | Stroomschema | Kredslobsdiagrammer |
Kytentäkaavio | Aansluitschema | Schema elettrico | Koplingskjema |
Esquema electrico | Elschema | Esquema eléctrico

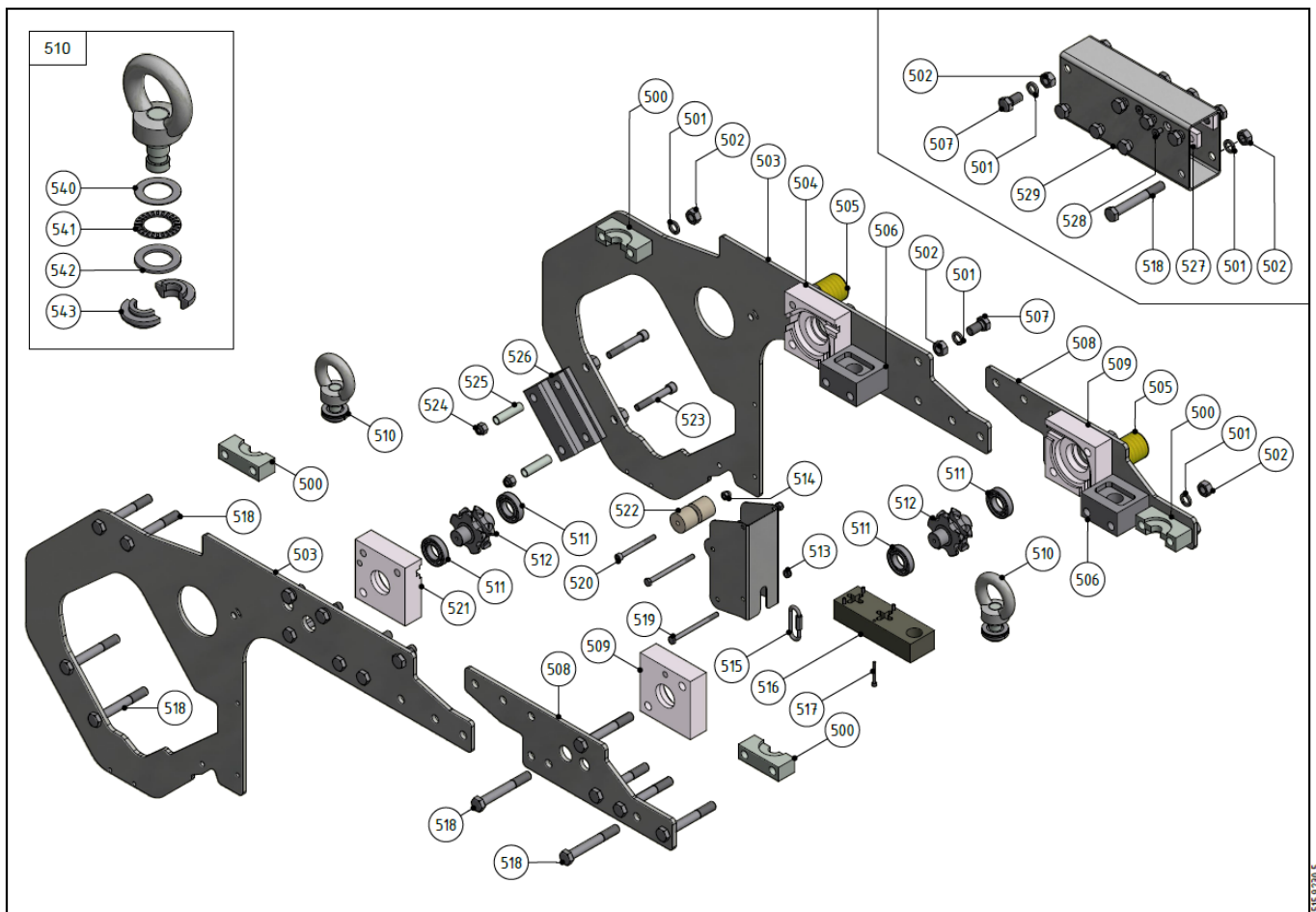


www.gis-ag.ch

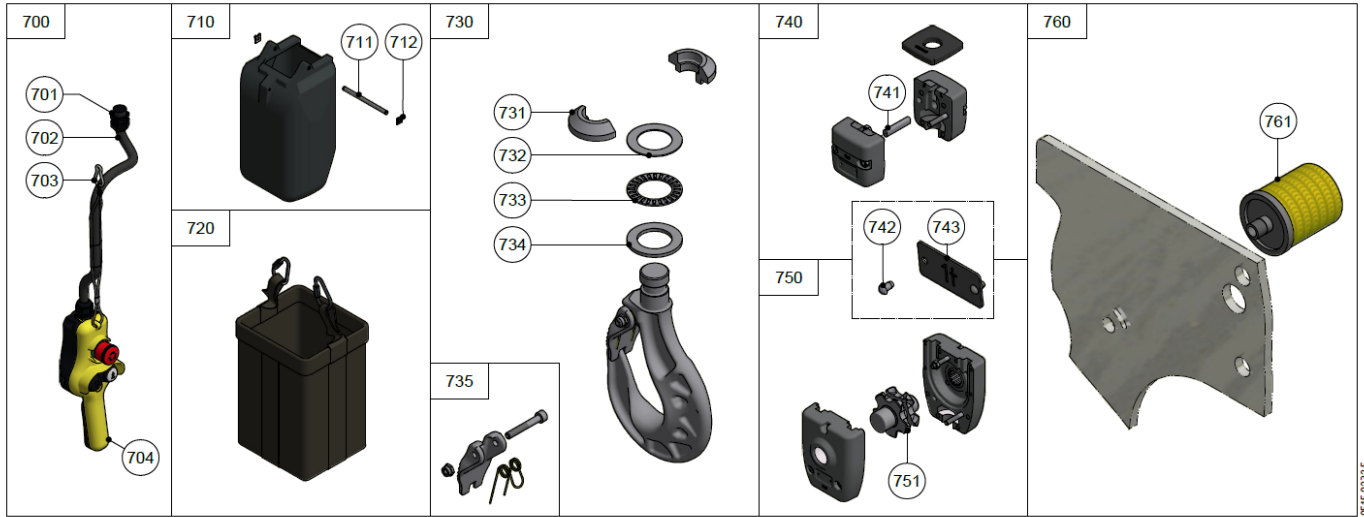




95.53.9215



95.53.9215.5



9515.0215

		GPK 1000
101	2t L=120	9515.3027.3
	1t L=90	9515.3028.3
102	ø156/ø149 x 2.5	9515.3054.4
103	2/8p 3 x 400V 50Hz	9517.0350.3
	2/8p 3 x 230V 50Hz	9517.0351.3
	2/8p 3 x 460V 60Hz	9517.0350.3
	2p 3x 230/400V 50Hz, 3x 460V 60Hz	9517.0250.3
104	ø166/ø14 x 43	9515.3075.3
105	217 x 108 x 310	9515.3011.2
106	M6 x 60/24 N	9030.0339
107	143 x 219 x 6	9515.3033.3
108	1.6A UL	9052.0012
109	M4 x 8	9030.0325
110	M4	9031.3901
111	2t + NA 42V	9517.1100.2
	1t + NA, 42V	9517.1000.2
112	M25 x 1.5	9055.3517
113	M25 x 1.5	9055.3103
114	M25	9055.4013
115	ø29.5/ø23.2 x 1	9040.2511
116	M25 x 1.5	9055.3513
117	M20 x 1.5	9055.3512
118	141 x 217 x 134	9515.3006.3
119	ø59 x 2.5 NBR 70	9035.0034
120	M5 x 12 T	9030.0003
121	M3 x 8	9030.8030
122	PMEA 500	9050.4023
123	1t, 2t, 480V	9512.1200.3
	DC	9512.1201.3
	1t, 2t, 500V-690V	9512.1202.3
124	400/42V	9056.4701.4
	230/42V 50/60Hz	9056.4741.4
	460/42V 50/60Hz	9056.4741.4
125	M5 x 10	9030.0027
126	103 x 84 x 41	9500.3069.3
127	M5 x 25	9030.0022
128	305 x 212 x 6	9515.3034.3
129	M6 x 60/24 N	9030.0339
130	303 x 210 x 251	9515.3005.3
131	M5x50/22	9030.0270
132	12Nm 100-125VAC 50/60Hz	9050.4100
	12Nm 200-240VAC 50/60Hz	9050.4101
	12Nm 360-420VAC 50/60Hz	9050.4102
	12Nm 440-480VAC 50/60Hz	9050.4103
	12Nm 500-575VAC 50/60Hz	9050.4104
133	M8 x 40	9030.2018
134	M8	0031.0008
135	ø8,4/ø16 x 1.6	0031.0578
136	258 x 176 x 254 N	9515.3020.2
	258 x 176 x 254 S	9515.3022.2
137	ø8 x 100	9031.5863
138	ø76 x 18	9515.3062.3
139	ø75/ø51 x 4	9515.3061.4
140	ø77 x 9	9515.3063.3
142	M8	9031.3904
143	M8 x 30	9030.0288

		GPK 1000
144	136 x 63 x 133	9515.3123.4
145	ø82 x 41.5	9515.3030.2
146	DIN 471 32 x 1.5	9031.2017
147	M8	9031.3904
148	M8 x 20	9030.0286
149	M6 x 20	0030.9230
150	ø10.5/ø6.5 x 2.5	9040.2508
151	256 x 65 x 327	9515.3000.0
152	120 x 60 x 72	9515.3008.2
153	7.45 x 23	9039.0030
154	0.25l	9041.0007
155	252 x 24.5 x 6 (7.45)	9041.6036
156	M8 x 55/28 T	9030.0343
157	M8 x 40/28 T	9030.0344
170	ø104.5 x 9.5	9515.3113.4
500	100 x 40 x 30	9405.1020.4
501	M16	9031.3804
502	M16	0031.0042
503	1110 x 631 x 8	9515.1010.3
504	125 x 125 x 40	9515.1012.3
505	ø52 x 102.5	9515.1020.4
506	90 x 80 x 50	9515.1014.4
507	M16 x 30	0030.2615
508	518 x 140 x 8	9515.1017.3
509	125 x 125 x 40	9515.1018.3
510	123 x 70 x 53	9405.1026.4
511	30 x 55 x 13	9038.0028
512	ø85 x 80	9515.3035.3
513	M8 N	9031.1277
514	M8	9031.1052
515	ø5 x 62	9039.0409
516	191 x 60 x 40	9515.3074.3
517	M5 x 45/22	9030.0269
518	M16 x 120/44	0030.3130
519	M8 x 110/22	9030.5003
520	M8 x 85/28	9030.0342
521	125 x 125 x 40	9515.1011.3
522	ø38 x 74.5	9515.1015.4
523	M12 x 80/36	9030.0340
524	M12 N	9031.1225
525	ø16 x 60	9405.3094.4
526	80 x 70 x 140	9515.1013.4
527	170 x 30 x 12	9515.1019.4
528	M8 x 16	9030.1813
529	80 x 140 x 320	9515.1002.3
540	ø47 / ø30 x 1	0038.3128
541	DIN 5405 - T2 AXK3047	0038.0252
542	ø47 / ø30 x 3	9038.1750
543	23.5 x 47 x 18	9225.3096
700	2K NA 3m	9290.1086.3
	2K NA 4m	9290.1087.3
	2K NA 5m	9290.1088.3
	2K NA 6m	9290.1089.3
	2K NA 7m	9290.2014.3
	2K NA 8m	9290.1090.3
	2K NA 10m	9290.1091.3

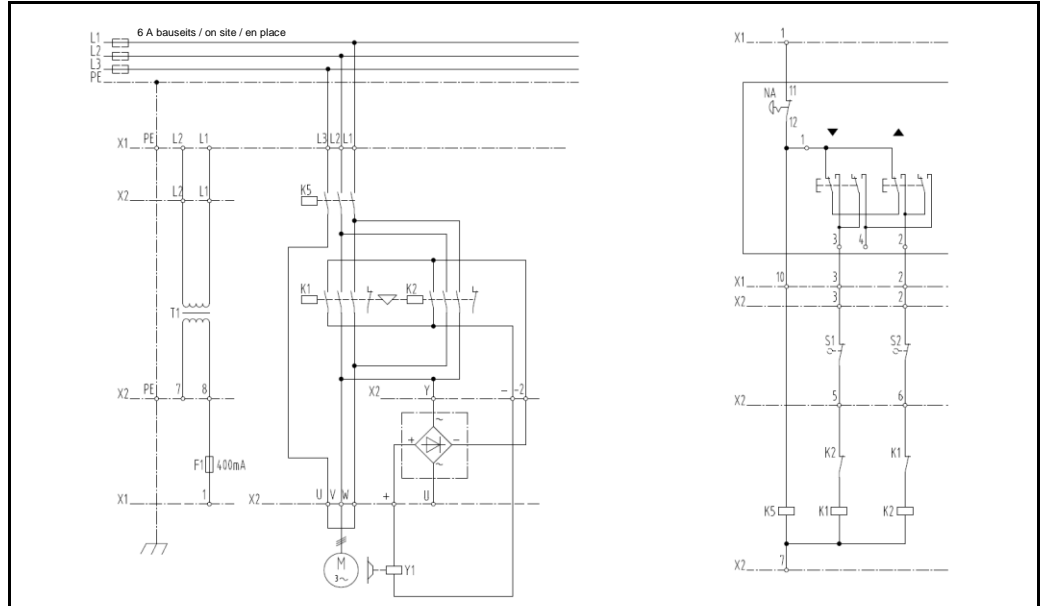
		GPK 1000
	2K NA 12m	9290.1092.3
	2K NA 15m	9290.1093.3
	2K NA 20m	9290.1094.3
701	M20 x 1.5	9055.3102
702	5 x 0.75mm2	9055.0110
703	ø5 x 50	9031.8004
704	2K NA	9290.2000.3
710	320 x 180 x 155	9515.3016.0
711	ø8 x 130	9500.3086
712	15 x 17 x 3.5	9031.2400
720	192 x 212 x 320, XS, 1000/10	9515.3108.3
	192 x 212 x 420, S, 1000/20	9515.3109.3
	192 x 212 x 590, M, 1000/30	9515.3110.3
	192 x 212 x 880, L, 1000/50	9515.3111.3
	192 x 212 x 940, XL, 1000/55	9515.3112.3
730	189 x 120 x 34.5	9515.3082.4
731	18.5 x 47 x 18	9225.3096.4
732	ø47 x ø30 x 1	0038.3128
733	ø47 x ø30 x 2	9038.0252
734	ø47 x ø30 x 3	9038.1750
735	68 x 40	9515.3119.4
740	80 x 80 x 90	9515.3094.3
741	ø8.5 x 49	9515.3072.4
742	ø3 x 5	9031.6604
743	0.4t	9220.3470.4
	0.5t	9220.3471.4
	0.63t	9220.3472.4
	0.8t	9220.3473.4
	1t	9220.3474.4
	1.25t	9220.3475.4
	1.6t	9220.3476.4
	2t	9221.3412.4
	2.5t	9230.3226.4
750	95 x 120 x 149	9515.3017.3
751	ø37 x 88	9515.3035.3
760	ø50 x 126	9515.1020.4
761	ø50 x 60 G1/4"	9401.2047.4

Elektrokettenzüge | Electric chain hoists | Palans électriques à chaîne

Schützensteuerung Contactor control Commande par contacteurs	1 Geschwindigkeit mit Not-Aus 1 speed with emergency stop 1 vitesse avec marche-arrêt	3 Ph	9510.9500.4
	2 Geschwindigkeiten mit Not-Aus 2 speeds with emergency stop 2 vitesses avec marche-arrêt	3 Ph	9510.9501.4

F	Steuersicherung	Control fuse	Fusible de commande
K	Schütz	Contactor	Contacteur
L	Zuleitung	Power supply	Alimentation électrique
N	Nullleiter	Neutral	Neutre
NA	Not-Aus	Emergency stop	Marche-arrêt
PE	Erdung	Earth	Mise à la terre
S	Schalter	Switch	Interrupteur
T	Transformator	Transformer	Transformateur
U, V, W	Motor	Motor	Moteur
X	Klemmenleiste	Terminal strip	Bornier de raccordement
Y	Bremse	Brake	Frein

9510.9500.4 / 3 Ph



9510.9501.4 / 3 Ph

