



Controllers



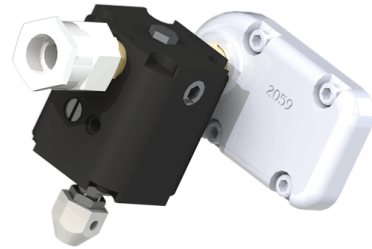
The BCS3017 and BCS3320 Up/ Down Pendant Control is Knight Global's standard control handle with variable speed control for loading and unloading varying weights. Most commonly used to control Pneumatic/ Air Balancers, Knight's Up/ Down Pendant Control handles are available in a straight (BCS3017) or coiled (BCS3320) hose that comes in standard lengths up to 10 ft. [3m].

The BCS2326 and BCS3330 Tandem Up/ Down Pendant Control incorporates all the benefits of the standard control handle with variable speed control for loading and unloading varying weights. Most commonly used to control Tandem Pneumatic/Air Balancers, Knight Global Up/ Down Pendant Control handles are available in a coiled (BCS2326) or straight (BCS3330) hose that comes in standard lengths up to 10 ft. [3m].



The BCS2090 and BCS2322 High Relieving Single Air Balancer Control supports a constant weight at zero gravity. They are most commonly used for near capacity or heavy weight applications. The High Relieving Single Air Balancer Control eliminates the need for a separate pendant and allows for the operator to more efficiently control the balance mode of a heavier part such as a setting fixture.

The BCS2018 Pneumatic/ Air Balancer Control balances a single object without requiring the need for a separate pendant control. It allows for a hands free operation while supporting a constant weight at zero gravity. The BCS2018 is ideal for fastening tools and recommended to be used for applications not to exceed 150 lbs. [68.0kg] (end effector and part).



The BCS2215 and BCS2323 Dual Air Balancer Control will support (2) two different weights at zero gravity. Most commonly used in applications where the part weight does not change, Knight's Dual Air Balancer Control handles are available in a straight (BCS2323) or coiled (BCS2215) hose that comes in standard lengths up to 10 ft. [3m].

The BCS2213 and BCS2214 Feather-Touch Air Balancer Control handle is typically used for lightweight applications. This control handle is activated by an up or down movement of the control handle. Knight's Feather-Touch Control handles are available in a Horizontal handle (BCS2213) or Vertical handle (BCS2214) with standard hose lengths of up to 10 ft. [3m] (Straight Hose only).

