

Ersatzteile

Spare parts

Pièces de rechange

Onderdelen

Reservedele

Varaosat

Pezzi di ricambio

Reservedeler

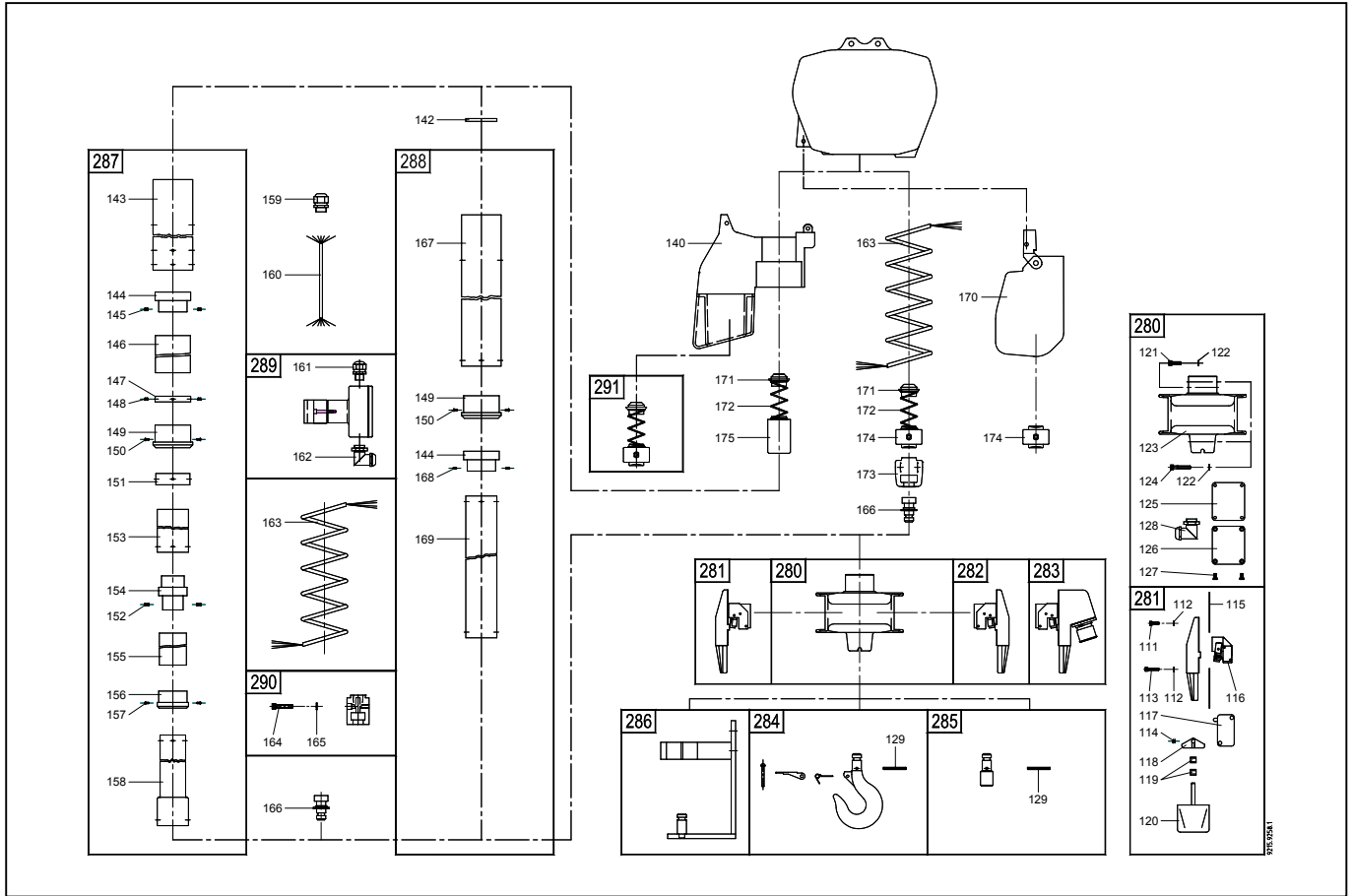
Peças

Reservdelar

Piezas de recambio

EMH





			EMH 125	EMH 250
111	M4 x 12	T; K	9030.0252	9030.0252
112	M4	T; K	9031.3901	9031.3901
113	M4 x 20	T; K	9030.0254	9030.0254
114	M5 x 5 DIN 916	T; K	0030.2308	0030.2308
115	70 x 98 x 1	T; K	9210.4064.4	9210.4064.4
116		T; K	9290.1019.4	9290.1019.4
117	XG3	T; K	9051.0500	9051.0500
118		T; K	9210.4030.4	9210.4030.4
119	ø6/10 x 10	T; K	0038.0319	0038.0319
120		T; K	9210.4029.3	9210.4029.3
121	M5 x 16 VZ	T; K	9030.0262	9030.0262
122	M5	T; K	9031.3902	9031.3902
123		T; K	9210.4027.2	9210.4027.2
124	M5 x 30/11	T; K	9030.0007	9030.0007
125	67/57 x 1	T; K	9210.4063.4	9210.4063.4
126	57/3 x 67	T; K	9210.4032.4	9210.4032.4
127	M4 x 8	T; K	0030.3449	0030.3449
128	PG 11	T; K	9055.3019	9055.3019
129	ø4 x 36	T; K	0031.6032	0031.6032
140	208 x 112 x 140	T	9215.4000.2	9216.4000.2
142	ø55/20 x 5	TE	9210.4084.4	9210.4084.4
143	ø70/63 x 615	TD800	9210.4079.4	
	ø70/63 x 815	TD1200	9210.4076.4	
	ø80/70 x 825	TD1200		9211.4021.4
	ø70/63 x 965	TD1500	9210.4050.4	
	ø80/70 x 975	TD1500		9211.4022.4
	ø70/63 x 1215	TD2000	9210.4061.4	
	ø80/70 x 1225	TD2000		9211.4023.4
144	ø63 x 42 x 35	T	9210.4023.4	
	ø70 x 35	T		9211.4027.4
145	M4 x 6	T	0030.1703	
	M4 x 10	T		9030.2005
146	ø62/58 x 110	TD	9210.4056.4	
	ø68/66 x 130	TD		9211.4025.4
147	ø63/57 x 10	TD	9210.4124.4	
	ø70/66 x 10	TD		9211.4053.4
148	M4 x 6	TD	0030.1703	0030.1703
149	ø70/55 x 40	T	9210.4024.4	
	ø80/65 x 40	T		9211.4026.4
150	ø2.6 x 6 VZ	T	9031.6602	
	ø2.6 x 8 VZ	T		9031.6603
151	ø60/55 x 20	TD	9210.4123.4	
	ø69/65 x 20	TD		9211.4052.4

			EMH 125	EMH 250
152	ø3 x 8	TD	0031.6011	0031.6011
153	ø55/50 x 615	TD800	9210.4080.4	
	ø55/50 x 815	TD1200	9210.4077.4	
	ø65/55 x 850	TD1200		9211.4017.4
	ø55/50 x 965	TD1500	9210.4051.4	
	ø65/55 x 1000	TD1500		9211.4018.4
	ø55/50 x 1215	TD2000	9210.4060.4	
	ø65/55 x 1250	TD2000		9211.4019.4
154	ø50/25 x 60	TD	9210.4054.4	
	ø55 x 60	TD		9211.4029.4
155	ø48/46 x 145	TD	9210.4057.4	
	ø54/51 x 160	TD		9211.4024.4
156	ø55/45 x 30	TD	9210.4055.4	
	ø65/50 x 30	TD		9211.4028.4
157	ø2.6 x 5	TD	9031.6600	
	ø2.6 x 8	TD		9031.6603
158	ø45/40 x 625	TD800	9210.4081.4	
	ø45/40 x 825	TD1200	9210.4078.4	
	ø50/40 x 855	TD1200		9211.4013.4
	ø45/40 x 975	TD1500	9210.4052.4	
	ø50/40 x 1005	TD1500		9211.4014.4
	ø45/40 x 1225	TD2000	9210.4059.4	
	ø50/40 x 1255	TD2000		9211.4015.4
159	PG 11	T	9055.3006	9055.3006
160	5 x 0.75 mm ²	T	9055.0006	9055.0006
161	PG 9	T	9055.3003	9055.3003
162	PG 11	T; K	9055.3019	9055.3019
163	12 Wdg. 5P	T800	9210.4091.4	9210.4091.4
	15 Wdg. 5P	T1200/1500	9210.4090.4	9210.4090.4
	18 Wdg. 5P	T2000; K3m	9210.4013.4	9210.4013.4
	23 Wdg. 5P	K4m	9210.4014.4	9210.4014.4
164	M6 x 30	T	9030.0277	9030.0277
165	M6	T	9031.3903	9031.3903
166		T; K	9210.4012.4	9210.4012.4
167	ø70/63 x 980	TE800	9210.4026.4	
	ø70/63 x 1380	TE1200	9210.4045.4	
	ø80/70 x 1465	TE1200		9211.4009.4
	ø70/63 x 1680	TE1500	9210.4046.4	
	ø80/70 x 1765	TE1500		9211.4010.4
	ø70/63 x 2180	TE2000	9210.4075.4	
	ø80/70 x 2265	TE2000		9211.4011.4
168	ø3 x 6	TE	0031.6010	
	ø3 x 10	TE		0031.6012

			EMH 125	EMH 250
169	ø55/50 x 995	TE800	9210.4025.4	
	ø55/50 x 1395	TE1200	9210.4043.4	
	ø65/50 x 1460	TE1200		9211.4005.4
	ø65/50 x 1695	TE1500	9210.4044.4	
	ø65/50 x 1760	TE1500		9211.4006.4
	ø55/50 x 2195	TE2000	9210.4074.4	
	ø65/50 x 2260	TE2000		9211.4007.4
170		K	9215.3031.1	9215.3031.1
171		T; K	9216.3035.4	9216.3035.4
172	Nr. 121	T; K	9034.1007	9034.1007
173		K	9211.4001.4	9211.4001.4
174		T; K	9216.3021.3	9216.3021.3
175		T	9216.4001.4	9216.4001.4
280		T; K	9210.4086.2	9210.4086.2
	NA	T; K	9210.4133.2	9210.4133.2
281	L 4P	T; K	9210.4112.3	9210.4112.3
282	R 5P	T; K	9210.4111.3	9210.4111.3
283	NA 5P	T; K	9210.4132.3	9210.4132.3
284		T; K	9210.4005.4	9210.4005.4
285		T; K	9210.4009.4	9210.4009.4
286		T	9210.4072.4	9211.4055.4
287		TD800	9210.4098.3	
		TD1200	9210.4099.3	9211.4039.3
		TD1500	9210.4100.3	9211.4040.3
		TD2000	9210.4101.3	9211.4041.3
		TE800	9210.4094.4	
288		TE1200	9210.4095.4	9211.4035.3
		TE1500	9210.4096.4	9211.4036.3
		TE2000	9210.4097.4	9211.4037.3
289		T	9210.4089.4	9211.4042.4
290		T	9210.4058.4	9210.4058.4
291		T	9216.3040.4	9216.3040.4